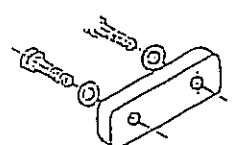


MODEL AC70
ACL-44



ANODE KIT 1693

MODEL AC MERCURY
AC70 (2 STROKE)
ACL-44 (4 STROKE 4 CYL BIG FOOT)

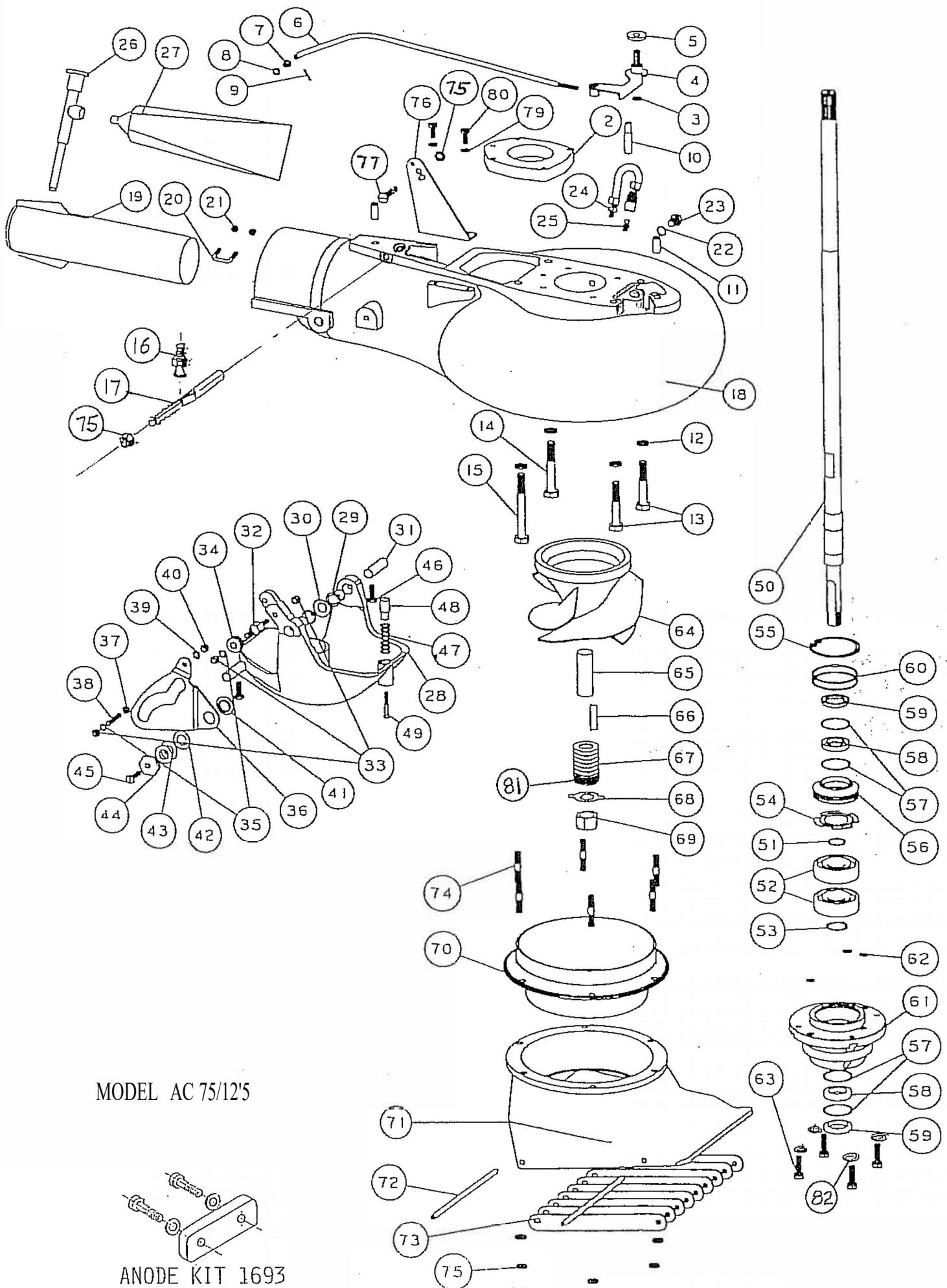
REF	QTY	PART NO.	DESCRIPTION	REF	QTY	PART NO.	DESCRIPTION
2	1	1009	PUMP ADAPTER AC, AM	51	1	1715	SHAFT ONLY ACL-44, 13T 31 3/32 LG
3	1	643	WASHER FIBER 3/8			1716.1	SHAFT ASSY COMPLETE, ACL-44 13T-5/16
4	1	1013	TILT ARM ASSY AC	52	1	41	SHAFT BEARING THRUST RING
5	1	1018	CAM SPACER AC	53	2	502	BEARING 7305B-UA
7	1	111	SHIFT ROD FORMED	54	1	511	TRUARC 5100-98
8	1	533	NYLINER 1/4 1D X 1/4	55	1	404	BACKUP WASHER
9	1	635	1/4 WASHER AN960C416	56	1	513	TRUARC N5002-250ZD
10	1	645	COTTER PIN 1/16 X 1/2	57	1	432	UPPER SEAL CARRIER W/SEALS & O RINGS
11	1	1265	SHIFT GUIDE AC-ROD	58	4	517	SPIROLOX RR-150S
12	2	630	DOWEL PIN 3/8 X 7/8	59	2	506	SEAL INNER
13	4	636	WASHER SPRING LOCK M10	60	2	507	SEAL OUTER 6324-S
14	2	588	BOLT HEX HD M10-1.5 X 60MM	61	2	527	O RING 568-141 3/32X2 5/16X2 1/2
15	1	589	BOLT HEX HD M10-1.5 X 70MM	62	1	393.5	BEARING CARRIER W/SEALS & O RING 5/16
16	1	590	BOLT HEX HD M10-1.5 X 90MM	63	3	521	O RING 568-011 1/16X5/16X7/16
17	1	1620	WEDGE STUD AN-4M	64	4	602.1	BOLT HEX HD 5/16-18 X 1 PATCH
18	1	1486	WEDGE AN	65	1	106.24	IMPELLER 7 3/16 W/136 SLEEVE 70-75 HP
		10071	VOLUTE WITH GATE AC	65	1	106.21	IMPELLER 6 5/8 W/136 SLEEVE 50HP
19	1	1007	VOLUTE WITH EXHAUST TUBE AC	66	1	136	SHAFT SLEEVE PLASTIC LARGE
20	1	128	EXHAUST TUBE ASSY LARGE 2 1/2	67	1	434	IMPELLER TEE KEY - SQUARE
21	1	847	CLIP EXHAUST TUBE 3/4	67	1	1706	IMPELLER TEE KEY - 1/2 ROUND
22	2	621	NYLOC 10-32	68	8	121	SHIM WASHER LARGE
23	1	1023	WASHER FIBER 3/8	69	1	781	NUT KEEPER LARGE/PKG 2 PER BAG
24	1	1022	BOLT HEX HD 3/8-16 X 1/2	70	1	122.1	SHAFT NUT 3/4-16 BRASS
25	1	975	LUBE HOSE ASSY	71	1	137	LINER 7 3/16 W/HARDWARE 70-75HP
26	1	539	ZIRC FITTING 1/4-28	71	1	134	LINER 6 5/8 W/HARDWARE 50HP
27	1	550	GREASE GUN	72	2	638	WASHER SPRING LOCK 1/4
28	1	552	GREASE 10 OZ TUBE NO. 630AA	73	2	575	BOLT HEX HD 1/4-20 X 7/8
29	1	1172	REVERSE GATE LARGE	74	1	104	INTAKE PAINTED ONLY
30	2	536	NYLINER 1/2 1D X 13/16			141.3	INTAKE ASSY 7 3/16 WITH GRILL & LINER
31	1	1178	SPRING GATE PIVOT 1/2			141.1	INTAKE ASSY 6 5/8 WITH GRILL & LINER
32	2	823	PIN GATE PIVOT 1/2 LARGE	75	2	14	GRILL ROD
33	1	1043	SHAFT ROLLER	76	9	117	GRILL BAR LARGE
34	3	624	NYLOC 1/4-28	77	6	1319	STUD - INTAKE LARGE
35	1	1042	ROLLER ASSY.	78	8	625	NYLOC 5/16-18
36	2	635	1/4 WASHER AN960C416			334	BRACKET ASSY MERCURY W/HARDWARE
37	1	1034	SHIFT CAM LARGE	79	1	153	BRACKET CABLE SUPPORT MERCURY
38	1	62	NUT HEX JAM 1/4-28	80	1	597	BOLT HEX HD 5/16-18 X 1 1/4
39	1	1199	PIVOT - CABLE END	82	2	635	1/4 WASHER AN960C416
40	1	638	WASHER SPRING LOCK 1/4	83	2	572	BOLT HEX HD 1/4-20 X 5/8
41	1	622	NUT HEX 1/4-28	84	1	1719	TORSIONAL DAMPER 3/4
42	1	1037	BUSHING CAM	85	4	640	WASHER SPRING LOCK 5/16
43	1	1038	WASHER CAM				
44	2	1039	SHIM - CAM				
45	1	1036	CAM ECCENTRIC DRILLED				
46	1	574.1	BOLT HEX HD 1/4-20 X 1 PATCH				
47	2	574	BOLT HEX HD 1/4-20 X 3/4 PATCH				
48	1	1170	SPRING GATE BUMPER				
49	1	1497	GATE BUMPER				
50	1	559.2	FIL HD SLOTTED 10-32 X 1 1/4 PATCH				
51	1	1016	SHAFT ONLY, AC 13T 30 5/32 LG				
		1017.1	SHAFT ASSY COMPLETE, AC 13T-516				

SIZE	TORQUE
1/4-20 (M6)	8-9 FT-LBS
5/16-18 (M8)	12 FT-LBS
3/8-16 (M10)	22 FT-LBS

TILLER STEERING

SHIFT CABLE ASSY 1263, 1264 SEE PAGE 21

- BEARING AND SEAL KIT # 429
- REVERSE GATE KIT COMPLETE #1223.04
- INTAKE ASSEMBLY #1333.04
- INTAKE STUD KIT #1335
- FLUSH FITTING #1064



MODEL AC 75/12'5

