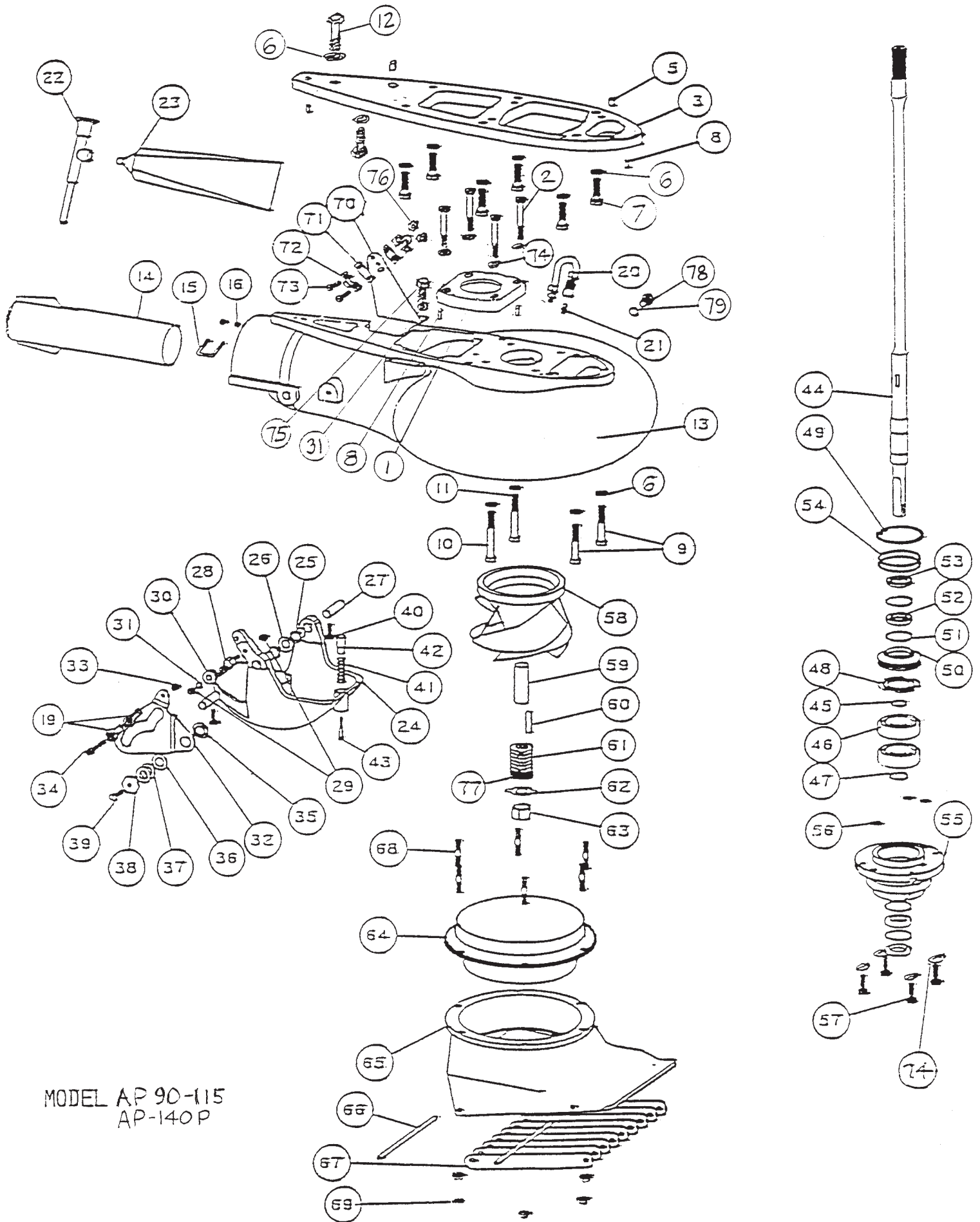


④ - 6 FT NEUTRAL CABLE



MODEL AP 90-115  
AP-140P

**MODEL AP-S90-115 AND MODEL AP-S140P (7 5/8 INTAKE) SUZUKI  
MODEL AP-E90-115 AND MODEL AP-E140P (7 5/8 INTAKE) JOHNSON / EVINRUDE**

REF NO.	QTY	PART NO.	DESCRIPTION	REF NO.	QTY	PART NO.	DESCRIPTION																																				
1	1	1542	PUMP ADAPTER AP	49	1	513	TRUARC N5002-250ZD																																				
2	4	597.1	BOLT HEX HD 5/16-18 X 1 3/4	50	1	432	UPPER SEAL CARRIER W/SEALS & O RINGS																																				
2	4	603	BOLT HEX HD 5/16-18 X 2 1/2	51	4	517	SPIROLOX RR-150S																																				
3	1	1763	ADAPTER PLATE AP 90/140	52	2	506	SEAL INNER																																				
4	1	1754	NEUTRAL CABLE ASSY SUZUKI	53	2	507	SEAL OUTER 6324-S																																				
	1	1547	NEUTRAL CABLE ASSY EVINRUDE	54	2	527	O RING 568-141 3/32X2 5/16X2 1/2																																				
5	2	HONDA	DOWEL PIN	55	1	393.5	BEARING CARRIER W/SEALS & O RINGS 5/16																																				
6	12	636	WASHER SPRING LOCK M10	56	3	521	O RING 568-011 1/16X5/16X7/16																																				
7	7	592	BOLT HEX HD M10-1.25 X 35MM	57	4	602.1	BOLT HEX HD 5/16-18 X 1 PATCH																																				
8	2	631	DOWEL PIN 3/16 X 1/2	58	1	1738	IMPELLER 7 3/8 STAINLESS V6																																				
9	2	608	BOLT HEX HD 3/8-16 X 2 1/4	59	1	136	SHAFT SLEEVE PLASTIC LARGE																																				
10	1	609	BOLT HEX HD 3/8-16 X 2 3/4	60	1	1706	IMPELLER TEE KEY - 1/2 ROUND																																				
11	1	610	BOLT HEX HD 3/8-16 X 3	61	7	121	SHIM WASHERS																																				
12	1	607	BOLT HEX HD 3/8-16 X 1 1/2	62	1	781	NUT KEEPER LARGE 2 PER BAG																																				
		1541.02	VOLUTE WITH GATE AP	63	1	122.1	SHAFT NUT 3/4-16 BRASS																																				
13	1	1540.02	VOLUTE WITH EXHAUST TUBE AP			1333.02	INTAKE ASSY FLANGED WITH GRILL BAR & LINER																																				
14	1	128	EXHAUST TUBE ASSY LARGE 2 1/2	64	1	1431	LINER FLANGED 7 3/8																																				
15	1	845	CLIP EXHAUST TUBE 1 3/8	65	1	1332.02	INTAKE PAINTED ONLY 7 3/8																																				
16	2	621	NYLOC 10-32	66	2	14	GRILL ROD																																				
19	2	553.2	BALL END 1/4X10-32 CABLE	67	9	117	GRILL BAR LARGE																																				
20	1	975	LUBE HOSE ASSY	68	6	1319	STUD - INTAKE LARGE																																				
21	1	539	ZIRC FITTING 1/4-28	69	6	625	NYLOC 5/16-18																																				
22	1	550	GREASE GUN	70	1	156	BRACKET CABLE SUPPORT																																				
23	1	552	GREASE 10 OZ TUBE NO. 630-AA	71	2	542	SHIM MORSE A035777																																				
24	1	1172.02	REVERSE GATE LARGE	72	2	543	CLAMP CHRYS 154317																																				
25	2	536	NYLINER 1/2 ID X 13/16	73	2	561.1	FL HD SLOTTED 10-24 X 3/4																																				
26	1	1178	SPRING GATE PIVOT 1/2	74	4	640	WASHER SPRING LOCK 5/16																																				
27	2	823	PIN GATE PIVOT 1/2 LARGE	75	2	572	BOLT HEX HD 1/4-20 X 5/8																																				
28	1	1043	SHAFT ROLLER	76	2	619	NYLOC 10-24																																				
29	2	624	NYLOC 1/4-28	77	1	1719	TORSIONAL DAMPER 3/4																																				
30	1	1042	ROLLER ASSY	78	1	1022	BOLT HEX HD 3/8-16 X 1/2																																				
31	3	635	1/4 WASHER AN960C416	79	1	1023	WASHER FIBER 3/8																																				
32	1	1034	SHIFT CAM LARGE	<b>MODEL AP-140P</b> BALANCE OF PARTS SAME AS AP90 - 115																																							
33	1	623	NYLOC 1/4-20																																								
34	1	576	BOLT HEX HD 1/4-20 X 1	<table border="1"> <thead> <tr> <th>REF NO.</th> <th>QTY</th> <th>PART NO.</th> <th>DESCRIPTION</th> </tr> </thead> <tbody> <tr> <td></td> <td></td> <td>1771.02</td> <td>VOLUTE WITH GATE AP-140P</td> </tr> <tr> <td>13</td> <td>1</td> <td>1770.02</td> <td>VOLUTE WITH EXHAUST TUBE AP-140P</td> </tr> <tr> <td>58</td> <td>1</td> <td>1721</td> <td>IMPELLER 7 5/8 STAINLESS V6</td> </tr> <tr> <td></td> <td></td> <td>1603.02</td> <td>INTAKE ASSY FLANGED WITH GRILL BAR &amp; LINER</td> </tr> <tr> <td>64</td> <td>1</td> <td>1605</td> <td>LINER FLANGED 7 5/8</td> </tr> <tr> <td>65</td> <td>1</td> <td>1602.02</td> <td>INTAKE PAINTED ONLY 7 5/8</td> </tr> <tr> <td>66</td> <td>2</td> <td>1667</td> <td>GRILL ROD</td> </tr> <tr> <td>67</td> <td>10</td> <td>1622</td> <td>GRILL BAR EX-LARGE</td> </tr> </tbody> </table>				REF NO.	QTY	PART NO.	DESCRIPTION			1771.02	VOLUTE WITH GATE AP-140P	13	1	1770.02	VOLUTE WITH EXHAUST TUBE AP-140P	58	1	1721	IMPELLER 7 5/8 STAINLESS V6			1603.02	INTAKE ASSY FLANGED WITH GRILL BAR & LINER	64	1	1605	LINER FLANGED 7 5/8	65	1	1602.02	INTAKE PAINTED ONLY 7 5/8	66	2	1667	GRILL ROD	67	10	1622	GRILL BAR EX-LARGE
REF NO.	QTY	PART NO.	DESCRIPTION																																								
		1771.02	VOLUTE WITH GATE AP-140P																																								
13	1	1770.02	VOLUTE WITH EXHAUST TUBE AP-140P																																								
58	1	1721	IMPELLER 7 5/8 STAINLESS V6																																								
		1603.02	INTAKE ASSY FLANGED WITH GRILL BAR & LINER																																								
64	1	1605	LINER FLANGED 7 5/8																																								
65	1	1602.02	INTAKE PAINTED ONLY 7 5/8																																								
66	2	1667	GRILL ROD																																								
67	10	1622	GRILL BAR EX-LARGE																																								
35	1	1037	BUSHING CAM																																								
36	1	1038	WASHER CAM																																								
37	2	1039	SHIM - CAM																																								
38	1	1036	CAM ECCENTRIC DRILLED																																								
39	1	574.1	BOLT HEX HD 1/4-20 X 1 PATCH																																								
40	2	574	BOLT HEX HD 1/4-20 X 3/4 PATCH																																								
41	1	1170	SPRING GATE BUMPER																																								
42	1	1497	GATE BUMPER																																								
43	1	559.2	FIL HD SLOTTED 10-32 X 1 1/4 PATCH																																								
44	1	1758	SHAFT ONLY, AP90-140 22T 30 5/16 LONG																																								
		1759.1	SHAFT ASSY COMPLETE, AP90-140 22T 5/16																																								
		1761	SHAFT ONLY, AP90-140X 22T 35 5/16 LONG																																								
		1762.1	SHAFT ASSY COMPLETE, AP90-140X 22T 5/16																																								
45	1	41	SHAFT BEARING THRUST RING																																								
46	2	502	BEARING 7305B-UA																																								
47	1	511	TRUARC 5100-98																																								
48	1	404	BACKUP WASHER																																								

TILLER STEERING CABLE 1717 SEE PAGE 26.3

BEARING, SEAL, SNAP & "O" RING KIT  
2 BRG 462.2

NEUTRAL CABLE NEEDED FOR REMOTE CONTROL  
SUZUKI 1754 SEE PG. 26.4

JOHNSON / EVINRUDE 1547 SEE PG. 26

SIZE	TORQUE
1/4-20 (M6)	8-9 FT-LBS
5/16-18 (M8)	12 FT-LBS
3/8-16 (M10)	22 FT-LBS