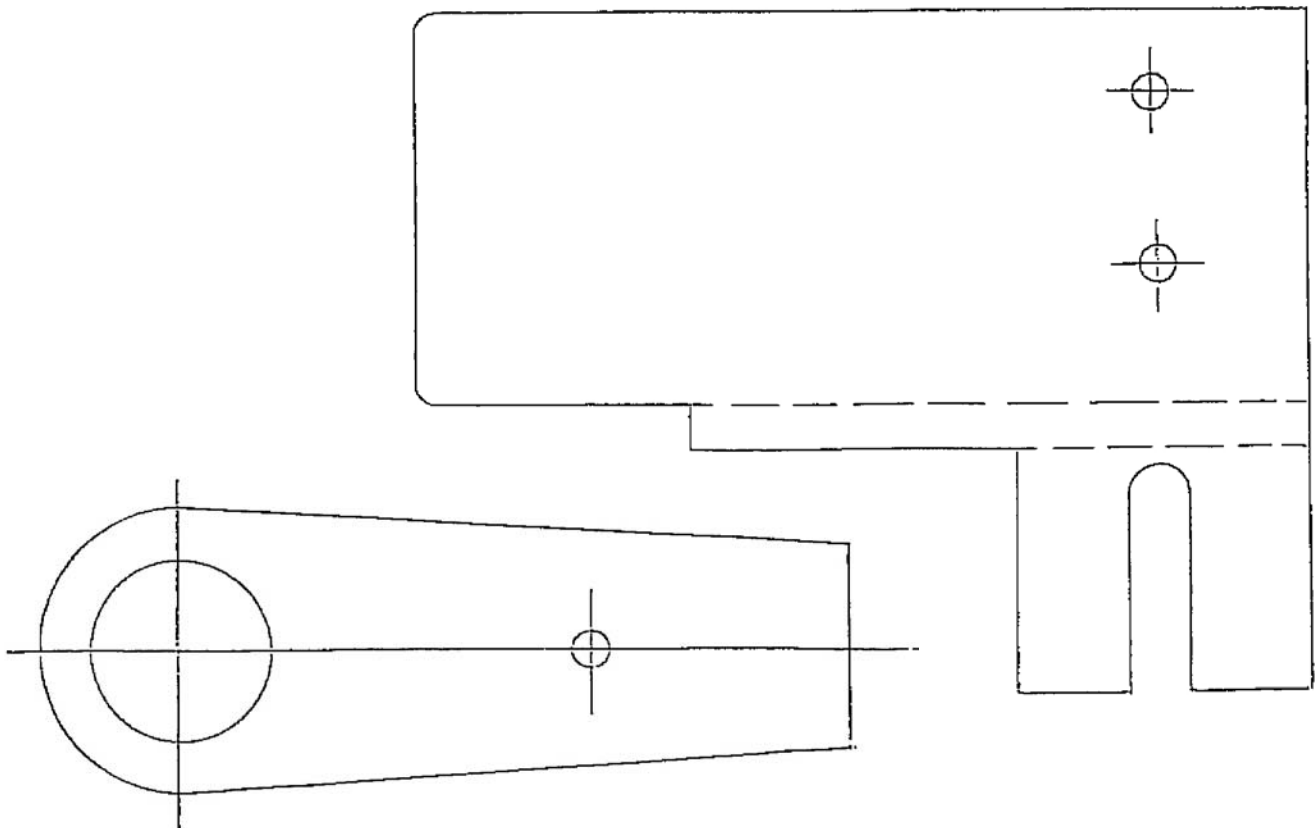


MODEL AJ-43 TILLER HANDLE STEERING
SHIFT CABLE ASSEMBLY 1566.1, 1566.2

1. Remove the plastic covers from the shift handle and the steering arm. Remove the shift handle.
2. Cut out the template for the shift handle and the cable anchor position on the steering arm.
3. Fold the cable anchor pattern along the dotted lines and place it on the steering arm with the fork up inside, straddling the threaded boss. Tape in position.
4. Place the shift handle pattern over the handle boss. Tape in position, center punch the 3 hole locations and drill through using 3/16 drill. The holes in the steering arm are long, reaching through the threaded boss itself.
5. Attach the ball rod end to the shift handle and tighten the thin head hex screw and lock nut. Remove the flanged plastic bushing, place the 1/16 thick spacer washer on the handle and replace the flanged bushing. Place the smaller 1/16 thick spacer over the square driver and install the handle.
6. Thread the shift cable all the way into the shift handle rod end. Attach the cable body to the steering arm using the shim, U-clamp, 2 #10-32 x 1-1/4 screws and lock nuts.



MODEL AJ-43 TILLER HANDLE STEERING
SHIFT CABLE ASSEMBLY 1566.1, 1566.2

7. Attach the lower end of the cable to the jet drive with the ball rod end threaded on the cable as far as it will go and the cable anchor bracket slid forward and locked. Twist the cable in the U-clamp so that the cable rests against the motor cowling and tighten the clamp screws.

8. Place the shift handle in forward, solidly in the detent. The reverse gate cam roller must be at the end of the slot in the cam. If these conditions are not met, slide the cable anchor bracket on the jet drive and/or adjust the threaded rod end on the cable.

9. Shift to reverse and back to forward. Do not be concerned if the gate does not reach reverse. There is clearance at this position and water pressure will close the gate.

10. In forward, with the roller at the end of the cam slot, the gate cannot be forcibly rotated toward reverse. Pull on the gate by hand to verify this.

11. Lock the nuts on the cable against the rod ends to complete the adjustment and install the plastic covers.

CAUTION You must return the throttle to idle before shifting.