

MODEL AKC-43 TILLER HANDLE STEERING
4 STROKE, 3 CYLINDER MOTORS
KIT 1659 SHORT SHAFT MOTORS
KIT 1660 LONG SHAFT MOTORS

1. Cut out the drilling template and attach it to the motor pan with masking tape. Line up the upper and right hand edges with the pan edges.

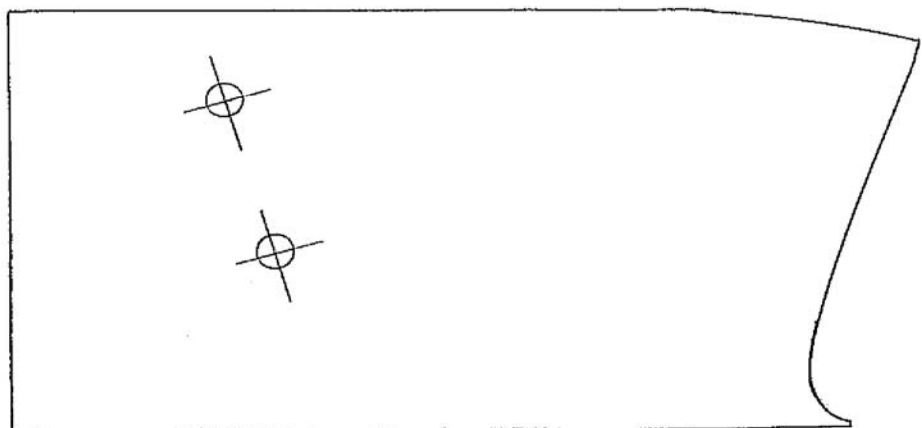
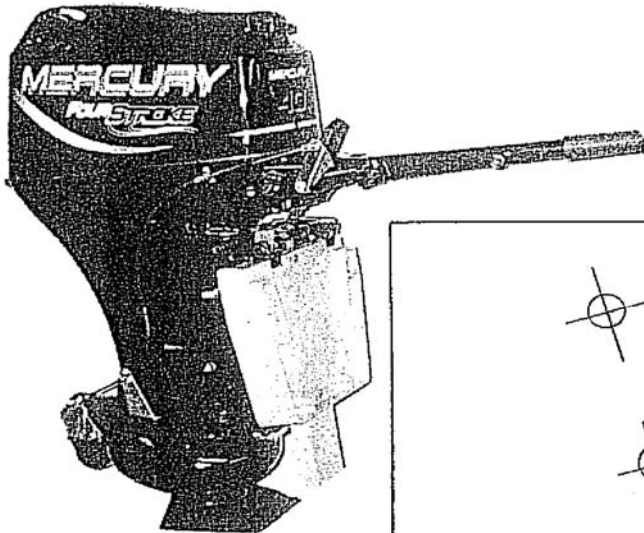
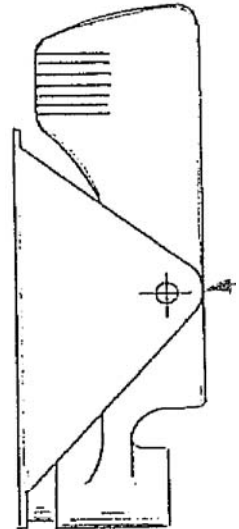
Drill 2- 1/16 holes, remove template and open up holes with a 3/16 drill.

2. Remove the bolt holding the shift handle. Install the 3/4 diameter spacer, pressed steel shift lever, longer bolt and flat washer. Do not tighten the bolt yet.

Before drilling the 1/4 inch hole in the shift handle, align the curved edge of the steel bracket with the side wall of the plastic handle. This is necessary for the hole to center itself between the inside ribs of the handle. Start a 1/4 inch drill, remove the plastic handle and drill through. Install a 1/4 x 5/8 bolt from inside the handle and then reassemble. Lubricate the spacer-steel lever pivot interface and bolt threads.

3. Thread the shift cable 2/3 way into the shift handle rod end. Attach the cable body to the motor pan using the shim, U-clamp, 2 #10-24 x 5/8 screws and lock nuts.

4. Attach the lower end of the cable to the jet drive with the ball rod end threaded on the cable as far as it will go and the cable anchor bracket centered and locked. Tighten the clamp screws. The clamp base is slotted to allow alignment for minimum cable bending.



MODEL AKC-43 TILLER HANDLE STEERING
4 STROKE, 3 CYLINDER MOTORS
KIT 1659 SHORT SHAFT MOTORS
KIT 1660 LONG SHAFT MOTORS

5. Place the shift handle in forward, solidly in the detent. The reverse gate cam roller must be at the end of the slot in the cam. If these conditions are not met, slide the cable anchor bracket on the jet drive and/or adjust the threaded rod end on the cable.
6. Shift to reverse and back to forward. Do not be concerned if the gate does not reach reverse. There is clearance at this position and water pressure will close the gate.
7. In forward, with the roller at the end of the cam slot, the gate cannot be forcibly rotated toward reverse. Pull on the gate by hand to verify this.
8. Lock the jam nuts on the cable against the rod ends to complete the adjustment.

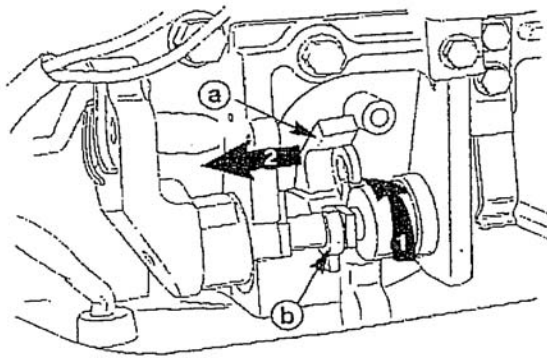
CAUTION You must return the throttle to idle before starting shifting.

NON-BIGFOOT GEAR HOUSING

4-STROKE MODELS

MERCURY/MARINER 25, 30/40, and 45/50

4. Disconnect shift shaft by un-snapping retainer to lower clip and sliding retainer to the left.



A- Retainer
B- Lower Clip