

MODEL "L, M, R" SERIES

L50M MANUAL STARTING MOTORS

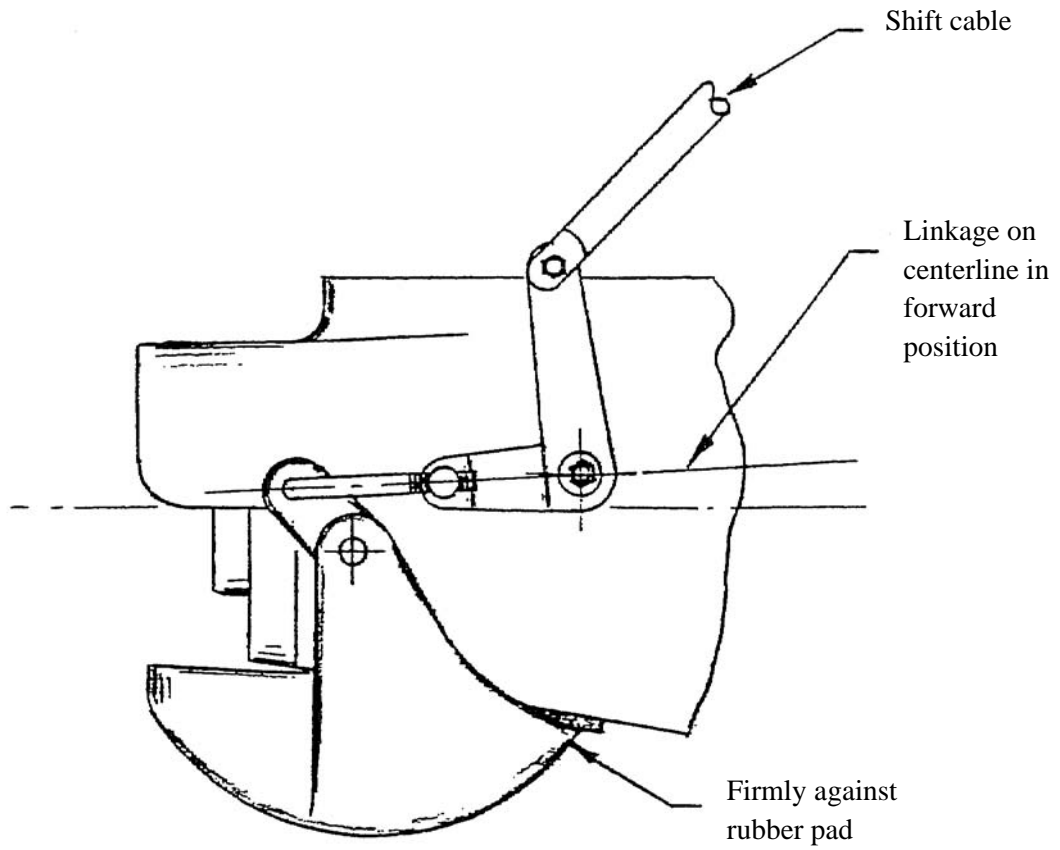
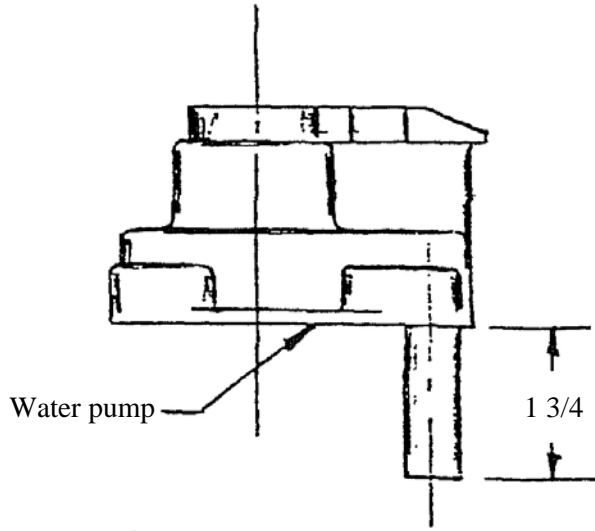
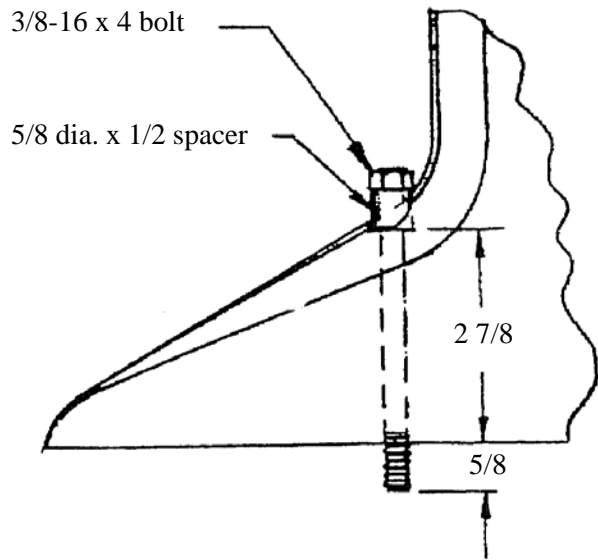
SHIFT HANDLE ASSEMBLY – 296.41, 296.43

1. The manual shift motor uses a mechanical shifting gearbox, therefore no electrical wires are connected to the gearbox. The shift rod, however, must be disconnected before the gearbox can be removed. To do this, remove the recoil starter spool to provide access to the clevis pin connecting the shift rod linkage. Remove the clevis pin and then remove the gearbox as explained in the L, M, R instructions. Then replace the starter spool.
2. Before mounting the jet, the hole in the exhaust housing, through which the shift rod passed, must be plugged. Two steel and rubber washers and through bolt with nut are provided. Tighten the bolt and nut until the rubber washers expand and seal the opening.
3. Mount the jet drive as explained in the instructions.
4. (296.41, 296.43) To attach the reverse gate shift linkage, remove the bolt locking the motor shift handle in place. Position the pressed steel shift handle over the cast motor handle and secure with a 1/4-20 x 1 1/4 bolt and plain nut. A 1/4 plain washer should be placed between the pressed steel piece and the cast handle, next to the rivet heads, to prevent bending the steel piece when the bolt is tightened. A 1/4-28 x 1 bolt, washer, and fiber lock nut secures the upper part of the handle, when the remote control cable is not used.
5. Attach the shift rod, adjusting its height, so that with the shift rod latched into the handle spring clip in forward position, the reverse gate linkage lines up on center line as shown on page 4. Install washers and cotter pins on the rod ends. Maintain a light film of grease on the shift rod where it enters the spring clip. A light, quick bump with the heel of the hand releases the spring latch to shift into reverse.

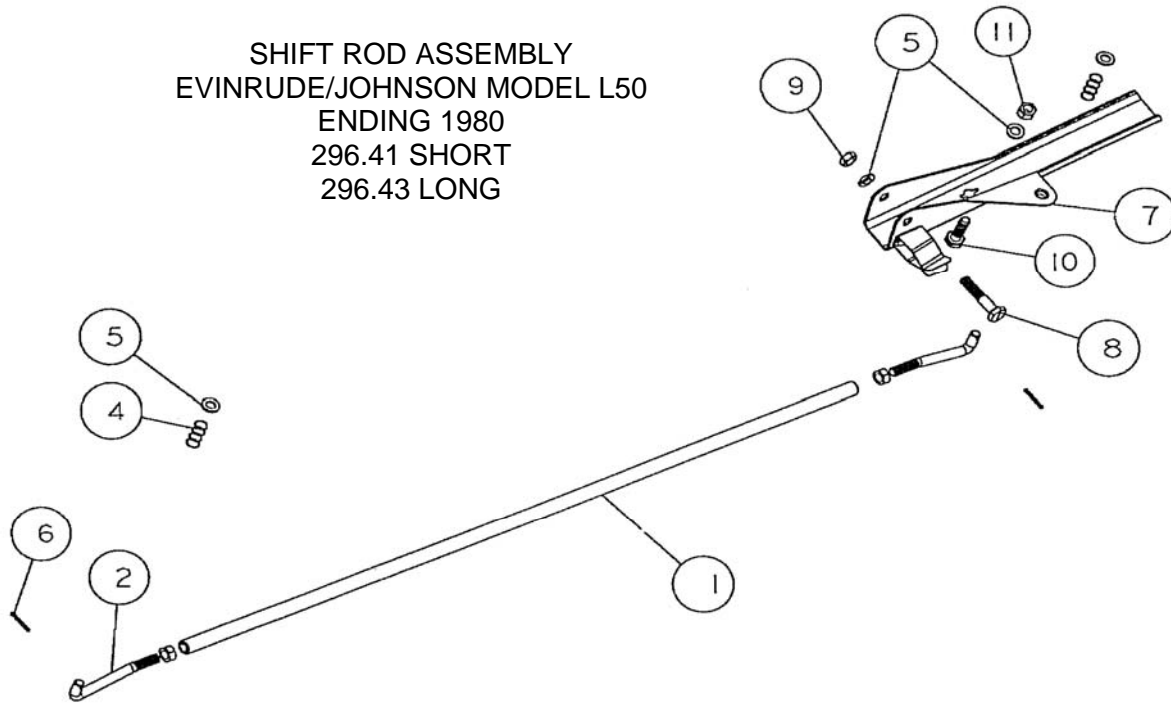
HYDRAULIC SHIFTING MOTORS- 1973

1. To remove the gearbox, the shift rod must be disconnected at its upper end.
2. Before mounting the jet, the hole in the exhaust housing, through which the shift rod passed, must be plugged. To steel & rubber washers and through bolt with nut are provided. Tighten the bolt and nut until the rubber washers expand and seal the opening.
3. Mount the jet drive as explained in the instructions.

MODEL "L, M, R" SERIES



SHIFT ROD ASSEMBLY
 EVINRUDE/JOHNSON MODEL L50
 ENDING 1980
 296.41 SHORT
 296.43 LONG



REF	QTY	PART NO.	DESCRIPTION
1	1	290	SHIFT ROD L50, UL3, AE 21 1/2 SHORT
1	1	291	SHIFT ROD L50L 25 1/2 LONG
2	2	24	ROD END FORMED
3	2	622	NUT HEX 1/4-28
4	2	1164	SPRING-ROD END
5	4	635	1/4 WASHER AN960C416
6	2	645	COTTER PIN 1/16 X 1/2
7	1	285	SHIFT HANDLE ASSY L50
8	1	585	BOLT HEX HD 1/4-20 X 1 1/4
9	1	623	NYLOC 1/4-20
10	1	583	BOLT HEX HD 1/4-28 X 1
11	1	624	NYLOC 1/4-28