

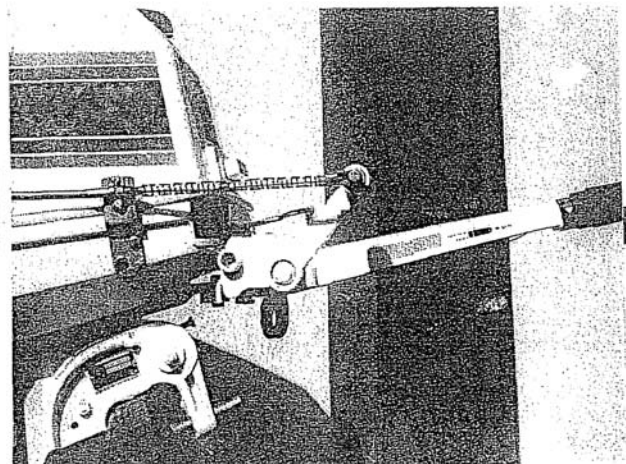
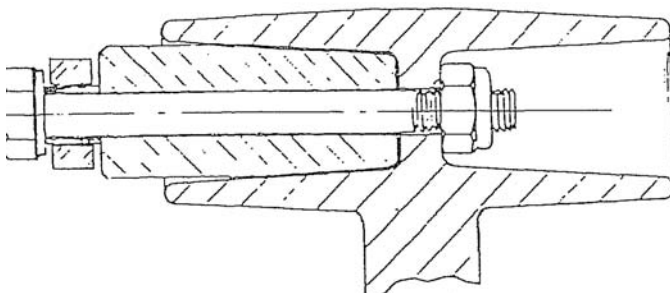
MODELS AFC, ABC, L60CL-89 TILLER HANDLE STEERING MOTORS

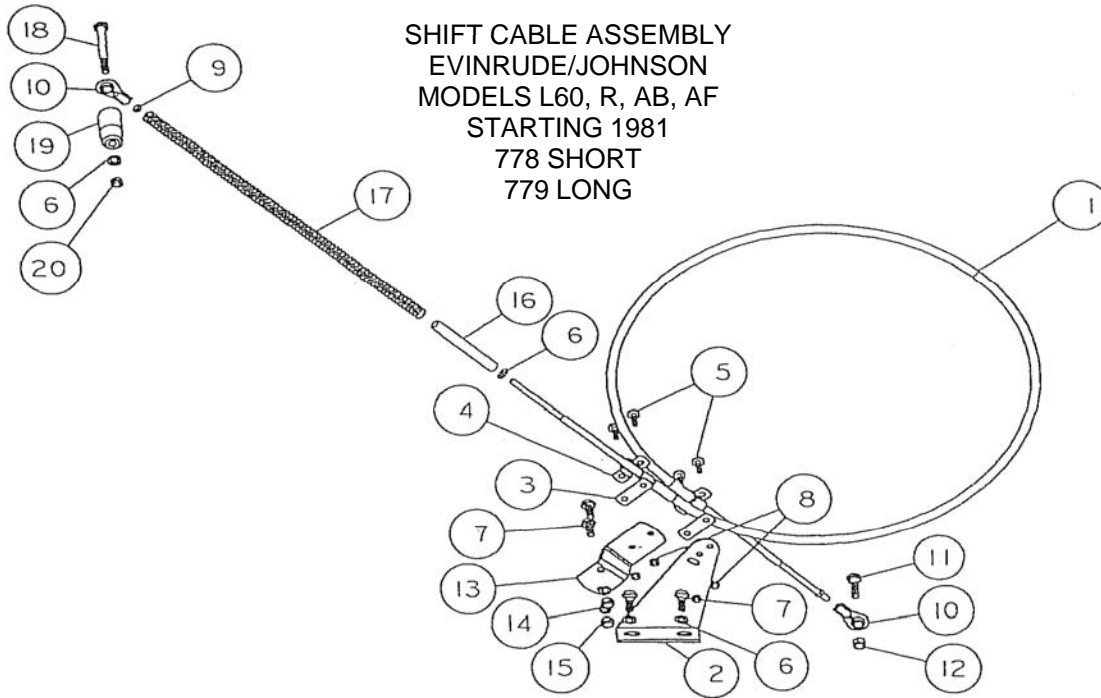
Shift Cable Assembly – Cam Gate

Kit No. 778 for Short Shaft Motors

Kit No. 779 for Long Shaft Motors

1. Place the tapered end of the aluminum plug into the outer bore of the shift handle grip. Insert a 1/4 inch drill into the plug hole, and drill through the center web of the handle grip. Do not attach the cable end yet. See diagram below.
2. Attach the triangle shaped lower cable support to the jet drive, using two 1/4-20 x 5/8 bolts and plain washers. Slide the support as far forward as it will go and lock the bolts.
3. Attach the lower cable end, using the thin wall busing, plain washer and locknut. The nut and washer go on the outside and lock firmly against the busing. The red cable end should be threaded onto the cable as far as it will go.
4. The upper red cable end should be threaded on the cable at a mid position to allow about 3/16 inch adjustment in either direction on the thread.
5. Place the motor shift handle in neutral position and lock the cable end to the handle as shown in step 1.
6. Using a light finger pressure on the gate, move the gate toward reverse until the cam roller is nested in the neutral notch of the cam. Hold in this position while performing step 7. Be sure shift handle is in neutral position
7. Hold the 1/8 inch thick upper cable bracket against the lower motor cover rim, as shown below. Drill two 1/4 inch mounting holes through the cover. Secure the bracket with two 1/4-20 x 5/8 bolts with lockwashers and plain nuts inside.
8. Shift to forward. The cam roller should be at the end of the slot in the cam such that the gate cannot be forcibly rotated toward reverse. Pull on the gate by hand to verify this. Readjust red cable end if necessary to favor gate being locked in forward position. Neutral position is less important.





REF	QTY	PART NO	DESCRIPTION
1	1	549	CABLE 3 1/2 FT MOR 33C SUPREME SHORT
1	1	547	CABLE 4 FT MOR 33C SUPREME LONG
2	1	156	BRACKET CABLE SUPPORT
3	2	542	SHIM MORSE A035777
4	2	543	CLAMP CHRYS 154317
5	4	561	FIL HD SLOTTED 10-24 X 5/8
6	4	635	1/4 WASHER AN960C416
7	4	572	BOLT HEX HD 1/4-20 X 5/8
8	4	619	NYLOC 10-24
9	2	621.1	HEX NUT 10-32 JAM
10	2	553.2	BALL END 1/4X10-32 CABLE
11	1	583	BOLT HEX HD 1/4-28 X 1
12	1	624	NYLOC 1/4-28
13	1	775	BRACKET CABLE L50C
14	2	638	WASHER SPRING LOCK 1/4
15	2	628	NUT HEX 1/4-20
16	1	1285	GUIDE-T BAR HANDLE
17	1	1284	SPRING, T BAR HANDLE
18	1	581	BOLT HEX HD 1/4-20 X 2 3/4
19	1	776	PLUG HANDLE L50C
20	1	623	NYLOC 1/4-20

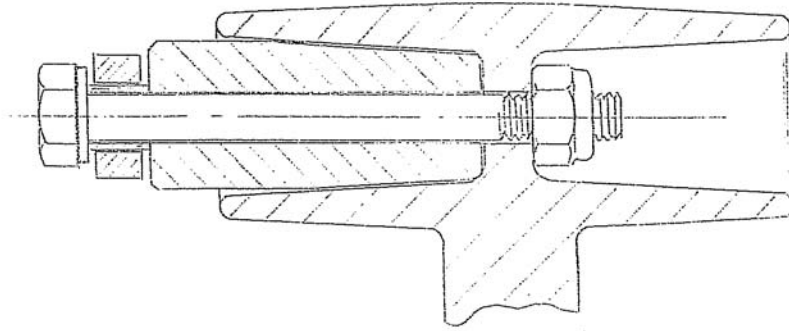
Models ABC, L50M Manual Starting Motors

Shift Cable Assembly – 1981 to Present

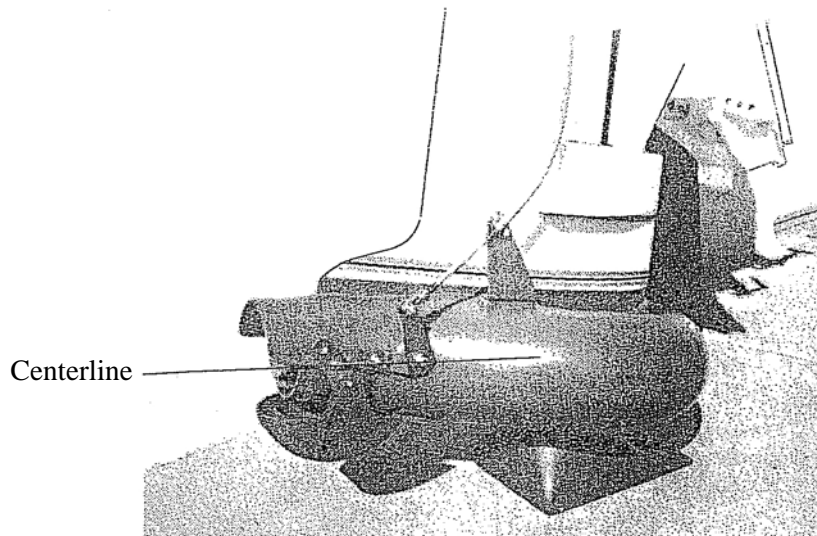
Kit No. 778 for Short Shaft Motors

Kit No. 779 for Long Shaft Motors

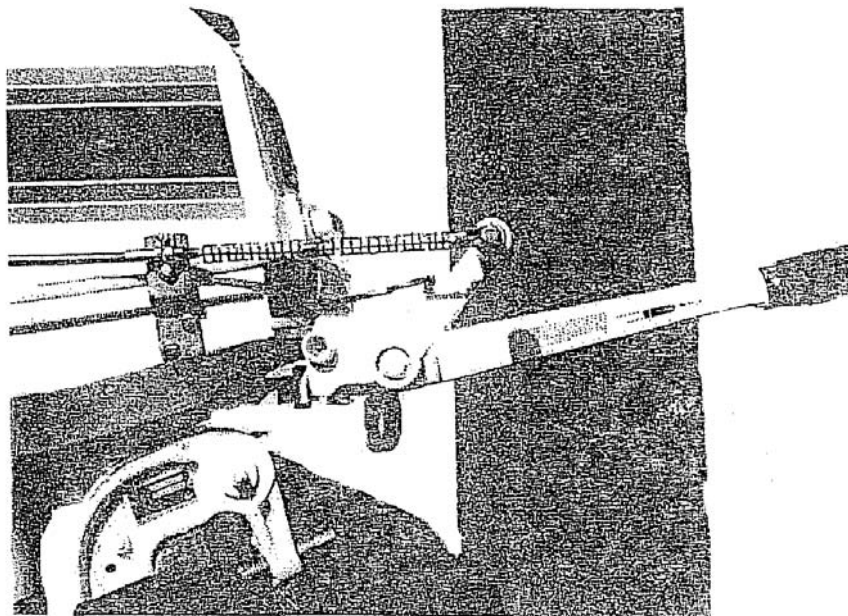
1. Place the tapered end of the aluminum plug into the outer bore of the shift handle grip. Insert a 1/4 inch drill into the plug hole, and drill through the center web of the handle grip. Do not attach the cable end yet.



2. Attach the triangle shaped lower cable support to the jet drive, using two 1/4-20 x 5/8 bolts and plain washers. Slide the support as far forward as it will go and lock the bolts.
3. Attach the lower cable end, using the 1/4-20 x 7/8 bolt, thin wall bushing, plain washer and lock nut. The nut and washer should go on the outside and lock firmly against the busing. The red cable end should be threaded onto the cable as far as it will go.
4. Next, pull the upper cable end out, to the end of its travel. This is the forward position with the reverse gate up against the rubber pad beneath the main housing. At this position the gate linkage should be slightly above centerline. You should be able to pull on the reverse gate itself without unlocking it from the forward position



5. The upper red cable end should be threaded on the cable at a mid position to allow about 3/16 inch adjustment in either direction on the thread.
6. Place the motor shift handle in forward position and lock the cable end to the handle as shown in step 1.
7. Hold the 1/8 inch thick upper cable bracket against the lower motor cover rim, as shown below. Drill two 1/4 inch mounting holes through the cover. Secure the bracket with two 1/4-20 x 5/8 bolts with lock washer and plain nuts on the inside.



8. Move handle from forward to reverse and back as a final check of adjustments. Be sure the gate locks in the forward position.

Outboard Jets

2035 Edison Ave.

San Leandro, CA 94577