

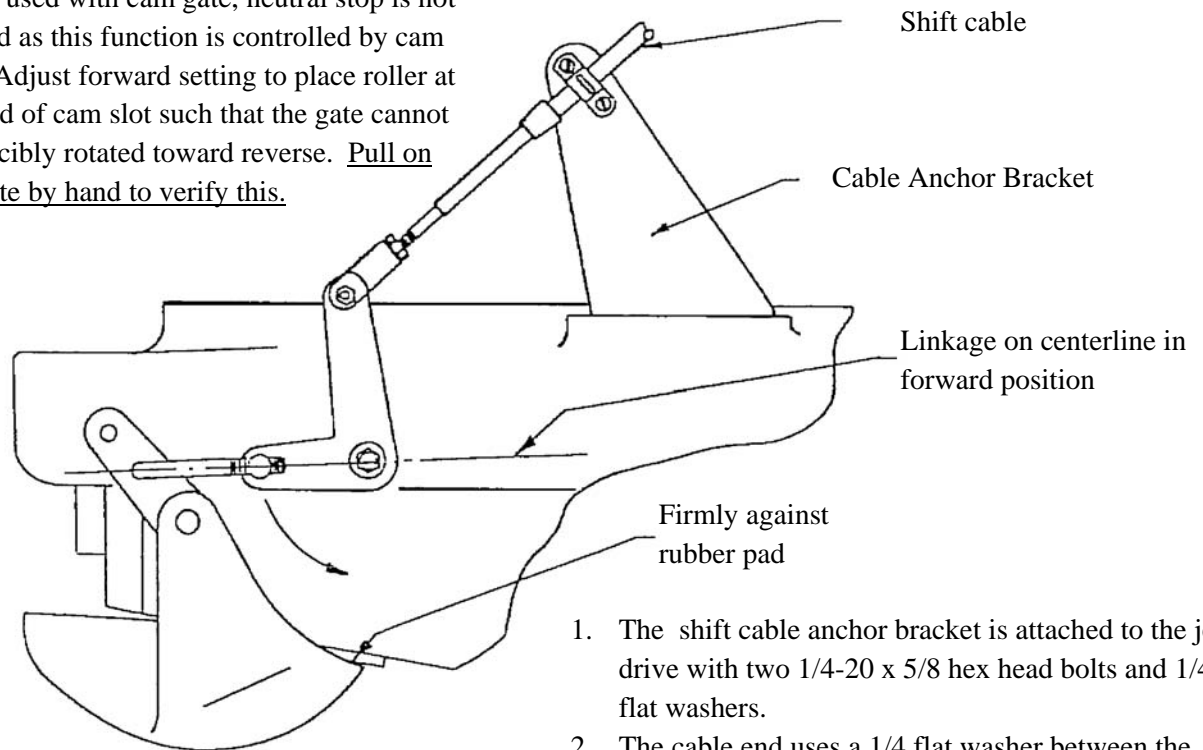
TRANSOM MOUNTED REVERSE GATE SHIFTER

#969 – 3 ft. cable for short shaft motors

#970 – 3 1/2 ft. cable for long shaft motors

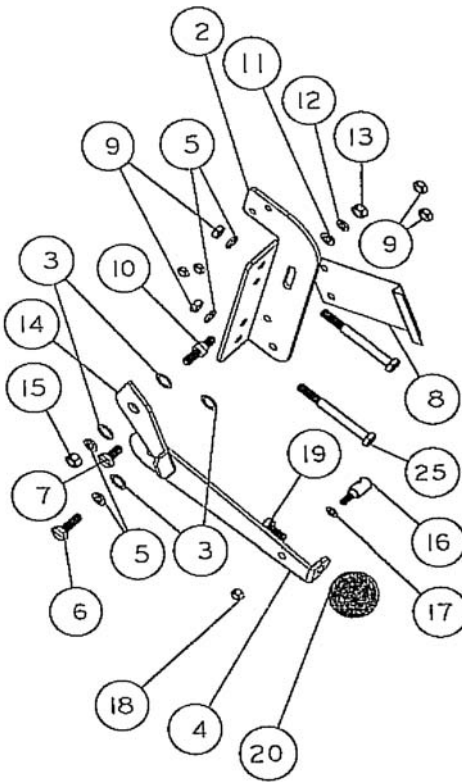
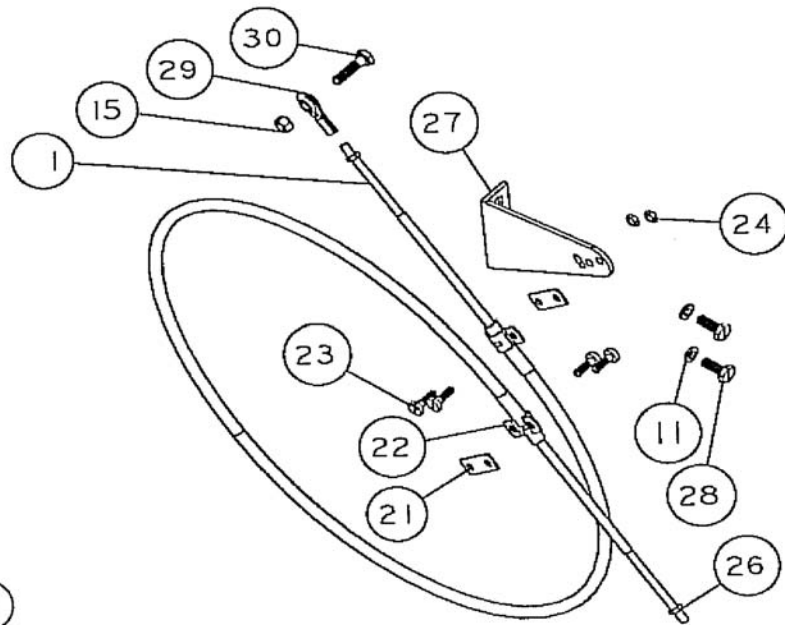
1. The handle bracket is bolted to the motor mounting bracket, or boat transom, close to the motor. Allow sufficient room for the motor to be tipped up.
2. Adjust the cable linkage so that the reverse gate is held against the rubber pad, linkage on centerline as shown below, when the handle is in forward and latched ahead of the leaf spring. This is accomplished by adjusting the position of the cable anchor bracket on the jet drive. To shift to reverse, depress the leaf spring with the thumb of your right hand while gripping the knob with the same hand.
3. A friction loaded, adjustable neutral lever is provided. Flip the neutral lever up for cold starts or to idle without the boat moving. After warmup, the lever is flipped down, out of the way. Experiment to find true neutral by repositioning the neutral lever in its slot, by means of the plain hex nut. When correct, readjust the fiber locknut to put the desired drag on the neutral lever.
4. On some Mercury and Mariner motors a tilt lock cam is actuated by the motor shift linkage to prevent the motor from tipping up in reverse. The jet drive actuates this same cam through the rod connecting the reverse gate with the splined tilt latch lever at the front of the jet drive. In order not to be unnecessarily actuating the FNR shift lever on the steering handle assembly, remove the rod attached to this lever. Adjust the rope start interlock near the flywheel to allow starting the motor when the reverse gate shift lever is in neutral.

5. When used with cam gate, neutral stop is not needed as this function is controlled by cam slot. Adjust forward setting to place roller at the end of cam slot such that the gate cannot be forcibly rotated toward reverse. Pull on the gate by hand to verify this.



1. The shift cable anchor bracket is attached to the jet drive with two 1/4-20 x 5/8 hex head bolts and 1/4 flat washers.
2. The cable end uses a 1/4 flat washer between the plastic cable end and the nut. Adjust cable per diagram above.

SHIFT CABLE
ASSEMBLY
TRANSOM
MOUNTED
3 FT. 969 SHORT
3 1/2 FT. 970 LONG



REF	QTY	PART NO.	DESCRIPTION
1	1	555	CABLE 3 FT 33C SUPREME SHORT
1	1	549	CABLE 3.5 FT 33C SUPREME LONG
2	1	922	SHIFT MOUNTING BRKT GATE
3	4	1023	WASHER FIBER 3/8
4	1	924	SHIFT HANDLE GATE
5	4	633	WASHER 1/4 X 1 1/8
6	1	573	BOLT HEX HD 1/4-20 X 3/4
7	1	571	BOLT HEX HD 1/4-20 X 1/2
8	1	939	SHIFT FORWAD LOCK GATE
9	4	623	NYLOC 1/4-20
10	1	926	SHIFT PIVOT GATE NEUTRAL
11	3	635	1/4 WASHER AN960C416
12	1	638	WASHER SPRING LOCK 1/4
13	1	622	NUT HEX 1/4-28
14	1	923	SHIFT STOP GATE NEUTRAL
15	2	624	NYLOC 1/4-28
16	1	927	SHIFT GATE CABLE PIVOT
17	1	632	WASHER NO. 10 FLAT
18	1	621	NYLOC 10-32
19	1	594	BOLT HEX HD 5/16-18 X 1/2
20	1	551	KNOB 1 3/8
21	2	542	SHIM MORSE A035777
22	2	543	CLAMP CHRYS 154317
23	4	561	FIL HD SLOTTED 10-24 X 5/8
24	4	619	NYLOC 10-24
25	2	584	BOLT HEX HD 1/4-20 X 5/8
26	2	621.1	HEX NUT 10-32 JAM
27	1	156	BRACKET CABLE SUPPORT
28	2	572	BOLT HEX HD 1/4-20 X 2 1/2
29	1	553.2	BALL END 1/4X10-32 CABLE
30	1	583	BOLT HEX HD 1/4-28 X 1